



ANNIVERSARY 2.0 (Lot model with furn \$78,995)

Model number: 41ANN28563AH17

3 beds • 2 baths • 1568 sq.ft. • 28' width • 56' depth

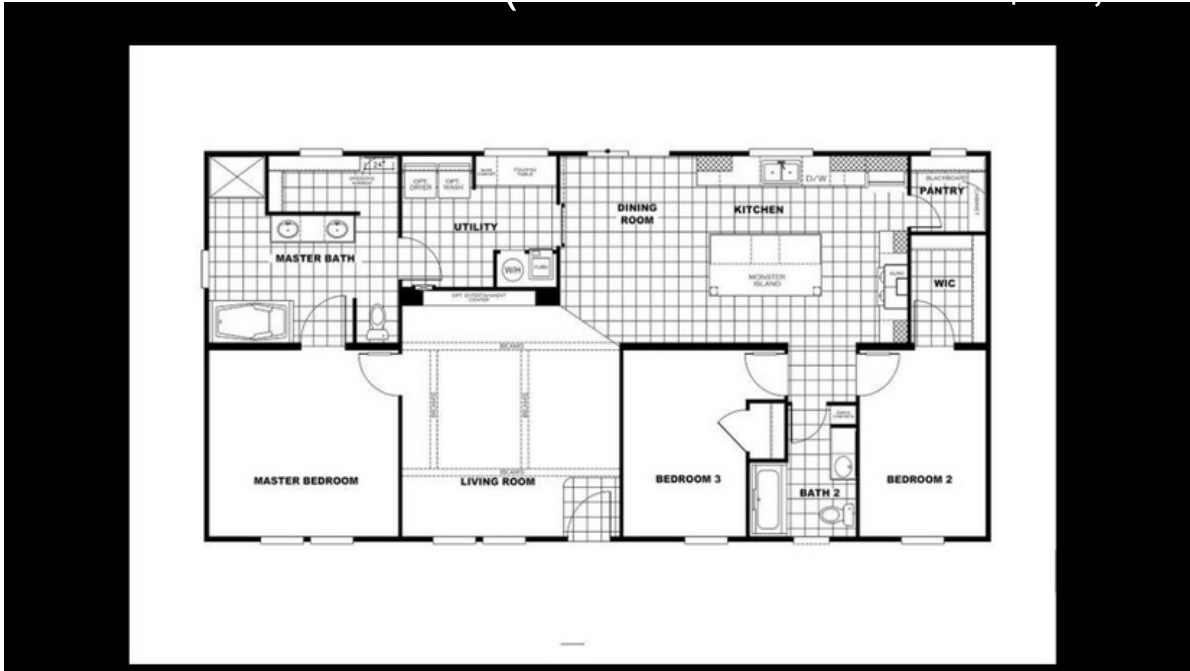
Our home building facilities invest in continuous product and process improvements. Plans, dimensions, features, materials, specifications and availability are subject to change without notice or obligation. Renderings and floor plans are representative likenesses of our homes and may differ from the actual homes. We invite you to tour a Home Center near you and inspect the highest value in quality housing available or call (337) 436-7822 to speak with a Home Consultant. Copyright 2017, CMH. All rights reserved.

<https://www.claytonlakecharles.com>

CLAYTON HOMES-LAKE
CHARLES

981 GERSTNER MEMORIAL
BLVD
LAKE CHARLES, LA 70601

Monday - Thursday: 9am - 7pm
Friday: 9am - 6pm
Saturday: 9am - 5pm
Sunday: Closed



ANNIVERSARY 2.0 (Lot model with furn \$78,995)

Model number: 41ANN28563AH17

3 beds • 2 baths • 1568 sq.ft. • 28' width • 56' depth

Our home building facilities invest in continuous product and process improvements. Plans, dimensions, features, materials, specifications and availability are subject to change without notice or obligation. Renderings and floor plans are representative likenesses of our homes and may differ from the actual homes. We invite you to tour a Home Center near you and inspect the highest value in quality housing available or call (337) 436-7822 to speak with a Home Consultant. Copyright 2017, CMH. All rights reserved.

<https://www.claytonlakecharles.com>

CLAYTON HOMES-LAKE
CHARLES

981 GERSTNER MEMORIAL
BLVD
LAKE CHARLES, LA 70601

Monday - Thursday: 9am - 7pm
Friday: 9am - 6pm
Saturday: 9am - 5pm
Sunday: Closed

(337) 436-7822